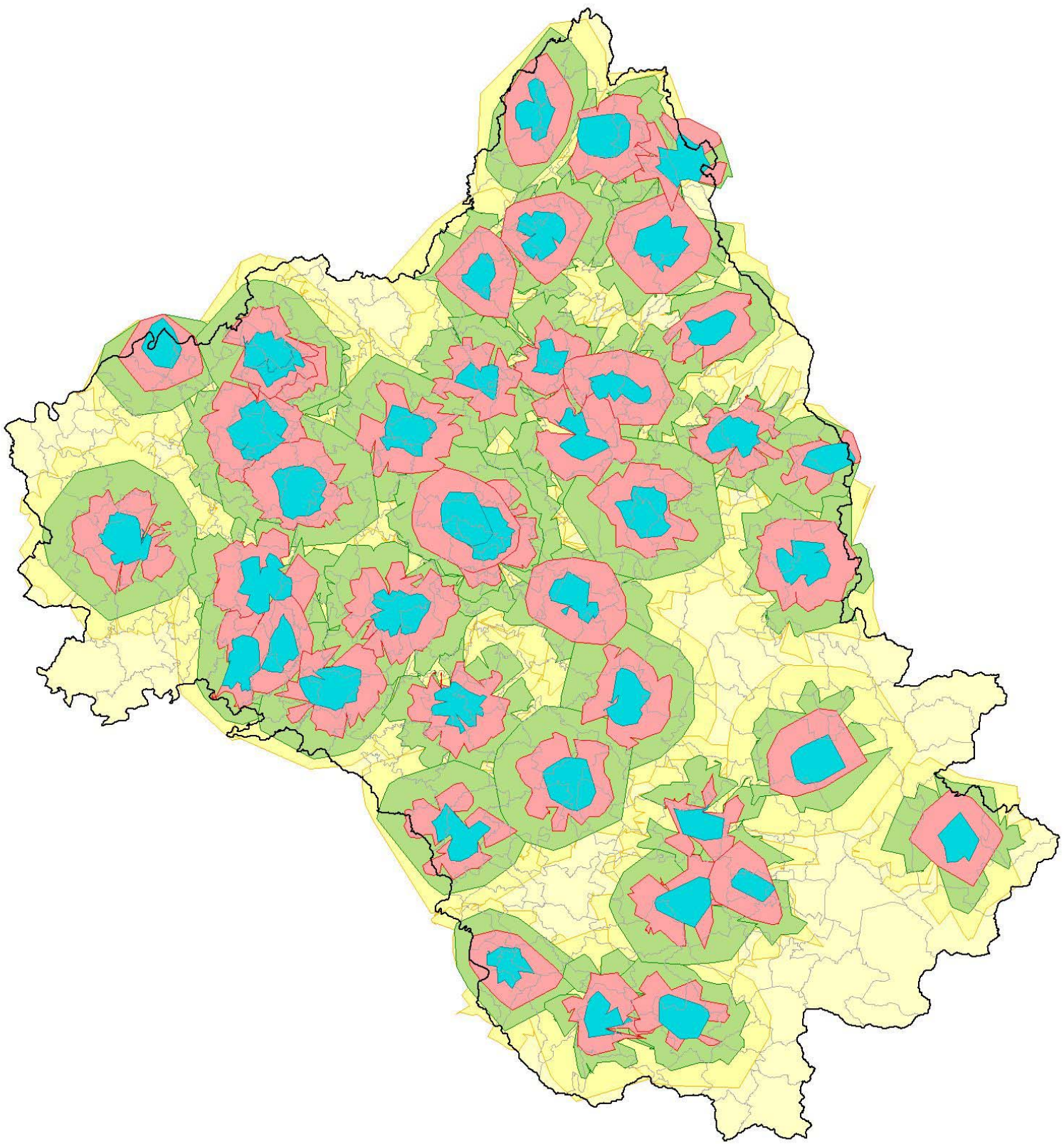
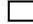


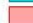





Couverture opérationnelle V= 45 km/h

Agence interdépartementale  
de Castres  
ONF-cellule SIG-JLD 10/03/2005



-  Limite départementale
-  Limite communale
-  < 10 mn
-  < 15 mn
-  < 20 mn
-  < 25 mn
-  > 25 mn

N



0 5 10 15 Kilomètres  
1:500000

BD carlo® IGN 2002 - Unités administratives